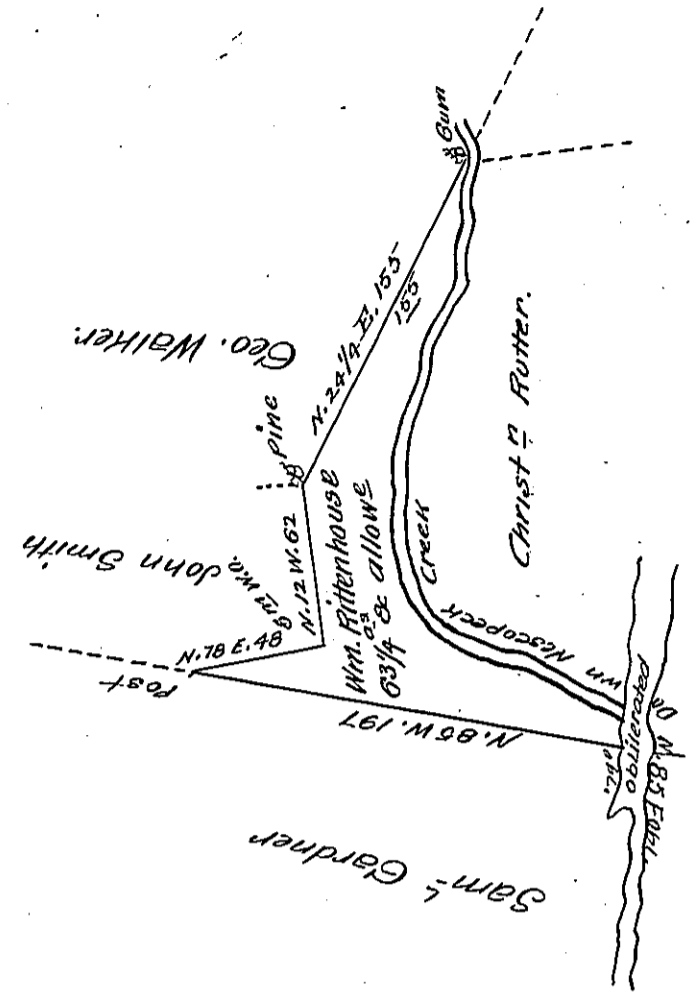


Courses & Distances
up to the spruce.

- S. 9. W. 36
- N. 85 E. 9
- S. 2 W. 19
- S. 29 W. 24
- S. 20 W. 20
- S. 3 W. 46
- S. 14 E. 30
- S. 42 E. 20
- S. 64 E. 34
- S. 78 E. 60
- S. 93/4 W. 10 1/2 to obl.
- 32 1/2



A Draft of a tract of land called — situate on the West Side of in
 Catawissey Township Northum^d County containing sixty thobL & allowance
 surveyed the 24th day of September 1796 for Willi. obl. se in Pursuance of
 a Warrant dated the 31st day of July 1793 by obl.

No Signature.

Daniel Brodhead Esq^r.
 Surv^r. Gen^l. } now Mifflin Township

IN TESTIMONY that the above is a copy of the original remaining on file in
 the Department of Internal Affairs of Pennsylvania, made
 conformably to an Act of Assembly approved the 16th day of
 February, 1833, I have hereunto set my Hand and caused
 the Seal of said Department to be affixed at Harrisburg,
 this twenty ninth day of June 1906

Laurel P. Brown
 Secretary of Internal Affairs.